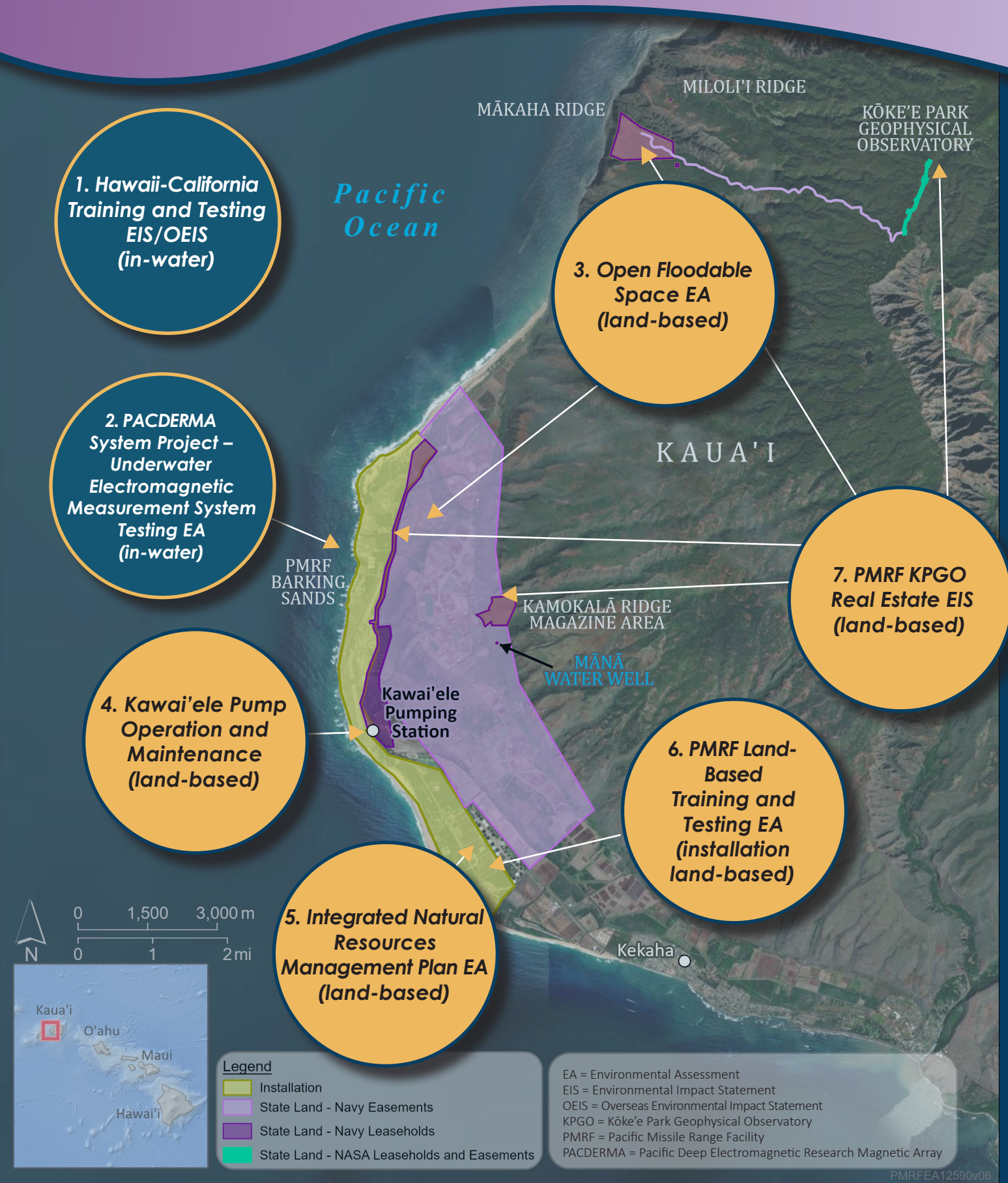


Ongoing Environmental Reviews at Pacific Missile Range Facility Barking Sands



1. Hawaii-California Training and Testing EIS/OEIS (in-water)

2. PACDERMA System Project - Underwater Electromagnetic Measurement System Testing EA (in-water)

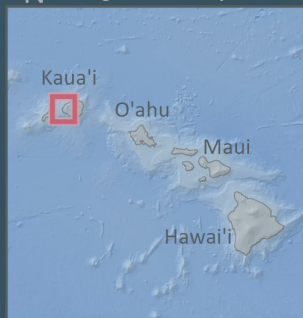
3. Open Floodable Space EA (land-based)

4. Kawai'ele Pump Operation and Maintenance (land-based)

5. Integrated Natural Resources Management Plan EA (land-based)

6. PMRF Land-Based Training and Testing EA (installation land-based)

7. PMRF KPGO Real Estate EIS (land-based)



Legend

- Installation
- State Land - Navy Easements
- State Land - Navy Leaseholds
- State Land - NASA Leaseholds and Easements

EA = Environmental Assessment
 EIS = Environmental Impact Statement
 OEIS = Overseas Environmental Impact Statement
 KPGO = Kōke'e Park Geophysical Observatory
 PMRF = Pacific Missile Range Facility
 PACDERMA = Pacific Deep Electromagnetic Research Magnetic Array

PMRFEA12590v06

PROJECT DESCRIPTIONS

In-Water Projects

1. Hawaii-California Training and Testing EIS/OEIS (U.S. Pacific Fleet)

The Navy proposes to conduct at-sea military readiness activities within the Study Area and to modernize and sustain Navy ranges necessary to support training and testing activities. This action is needed to ensure U.S. military services are able to organize, train, and equip service members and personnel to meet their national defense missions.

Projected Schedule:

- Scoping Phase: Dec. 2023-Jan. 2024 (completed)
- Draft EIS/OEIS Public Review and Comment: Dec. 2024-Feb. 2025
- Decision Document: Dec. 2025

2. PACDERMA System Project – Underwater Electromagnetic Measurement System Testing EA (NAVSEA)

The Navy proposes to construct underwater electromagnetic measurement system to characterize a submarine's submerged electric signature.

Projected Schedule:

- Draft EA Public Review and Comment: Sept. 2024
- Decision Document: June 2025



Land-Based Projects

3. Open Floodable Space EA

The proposed action is to manage a 200-acre open floodable space adjacent to interior northern portion of PMRF Barking Sands to manage and mitigate sea level rise encroachment on installation grounds and surrounding agricultural lands. The open space would include an additional 200-acre buffer to provide suitable habitat for native plants and animals.

4. Kawai'ele Pump Operation and Maintenance EA

The Navy proposes to continue operation and maintenance of a pump system on 3 acres of federal land to control water levels and preserve the agricultural viability of surrounding lands within Mana Plain.

5. Integrated Natural Resources Management Plan EA (Navy Region Hawaii)

The Navy proposes to implement the 2023 INRMP, which provides management recommendations to protect species, land, waterways, wetlands, and floodplains.

Projected Schedule:

- Draft EA Public Review and Comment: May-June 2024 (completed)
- Decision Document: Oct. 2024

6. PMRF Land-Based Training and Testing EA (U.S. Pacific Fleet)

The Navy proposes to conduct ongoing and proposed military readiness land-based training and testing activities at PMRF launch areas and other locations. This action is needed to 1) ensure U.S. military services are able to organize, train, and equip service members and personnel to meet their respective national defense missions; 2) update NEPA compliance for ongoing land-based training and testing activities; and 3) provide additional coverage for other military services' activities at PMRF.

Projected Schedule:

- Draft EA Public Review and Comment: Aug.-Sept. 2024
- Decision Document: Jan. 2025

7. PMRF KPGO Real Estate EIS (Navy, NASA)

The Navy proposes to maintain long-term Department of Defense use of 8,348 acres of State of Hawaii lands on Kaua'i for operational continuity and sustainment of the military readiness mission. NASA proposes to maintain long-term use of 23 acres of State of Hawaii lands for continued operation of KPGO.

Projected Schedule:

- Scoping Phase: May-June 2024 (completed)
- Draft EIS Public Review and Comment: June-July 2025
- Decision Document: May 2026



E Pane Mai Ka Nonoi O Nohili *Answering the Requests of Nohili*

ACRONYMS

EA = Environmental Assessment

EIS = Environmental Impact Statement

KPGO = Kōke'e Park Geophysical Observatory

NASA = National Aeronautics and Space Administration

NAVSEA = Naval Sea Systems Command

NEPA = National Environmental Policy Act

OEIS = Overseas Environmental Impact Statement

PACDERMA = Pacific Deep Electromagnetic Research Magnetic Array

PMRF = Pacific Missile Range Facility